
Flyte





California born and bred

We're a leading manufacturer of commercial solutions in the U.S. — and #1 in task chairs. From tables and lounge to screens and more, we've been the go-to destination for comprehensive, build-to-order solutions for over 25 years. We combine award-winning design with the fastest lead times around, and our design and planning services can turn product innovation into your space inspiration. We're able to build almost any specification you want, deliver it when you need it, and offer a level of value no one can match. It's all part of our indie California spirit and drive to be the one place you go for all of your spaces.

Grab and go with the flow

Discover how a truly flexible space takes Flyte. Stowable, stackable, customizable and comfortable, this innovative stacker-nester collection reaches new heights of what a multipurpose chair can do on the fly — in a mighty and mobile design.



Sit back. Nest forward.

As the only angled nester (that also stacks) out there, our innovative Flyte is truly a forward-leaning, space-saving solution. Chairs deploy easily and securely with a latch that locks the seat into position with a satisfying click. And the multiple mesh and upholstery options mean you can take Flyte anywhere.



Stacks and nests for ultimate flexibility

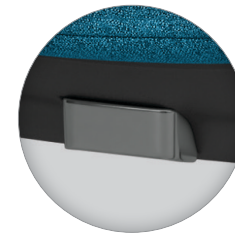
Closer look

CONTOURED SEAT AND BACK AVAILABLE IN PLASTIC, UPHOLSTERED AND MESH

12 MESH COLORS;
3 PLASTIC SHELL COLORS;
2 LEG AND ARM COLORS

AMPLE CLEAN-OUT SPACE FOR QUICK MAINTENANCE

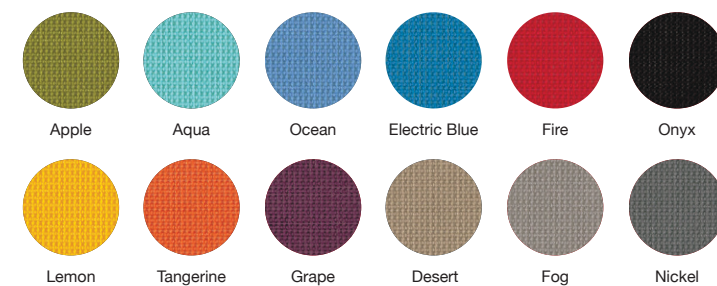
LATCH LEVER LOCKS THE SEAT SECURELY



STACKS UP TO 4 CHAIRS AND NESTS ENDLESSLY



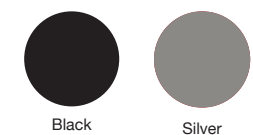
Mesh colors



Shell colors



Frame and arm colors

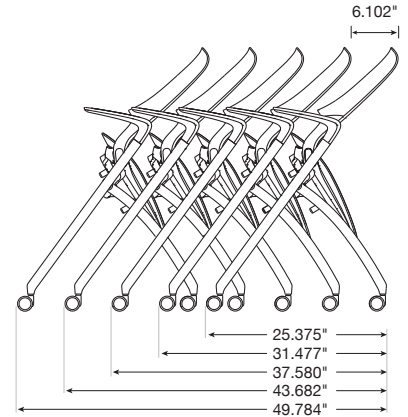
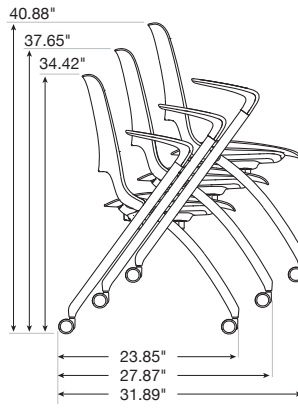




Destination: Versatility

The smart design and convenient features on Flyte make it a powerful solution for any space — education, training, multipurpose and more. Deploy comfort quickly, clean up spaces easily and coordinate endlessly with a collection built to elevate experience.

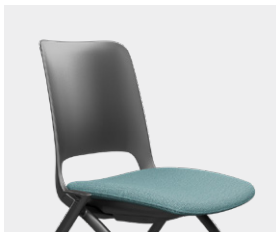
Specifications



MODEL	1651.FT4 Stacking/Nesting
Seat Width	17.5-18.0
Seat Depth	16.75
Seat Height	18
Back Width	16.25-17.75
Back Height	19.5
Weight With Arms	20
Weight Armless	19
Weight Capacity Warranty	350 lb

Dimensions are in inches.

Chair options



Plastic



Mesh back



Fully upholstered

Arm and seat options



Fixed arm



Armless



Plastic seat



Upholstered seat

SitOnIt • Seating®



FRONT COVER TEXTILE: DesignTex Tweed Multi Flame

For more information, please visit us at sitonit.net • tel (888) 274-8664 • fax (714) 995-4855 • sales@sitonit.net • 6415 Katella Avenue, Cypress, CA 90630

SitOnIt Seating and Flyte are trademarks or registered trademarks of Exemplis LLC. ©2024 Exemplis LLC. Form No. C6791 Printed in USA. P240724